

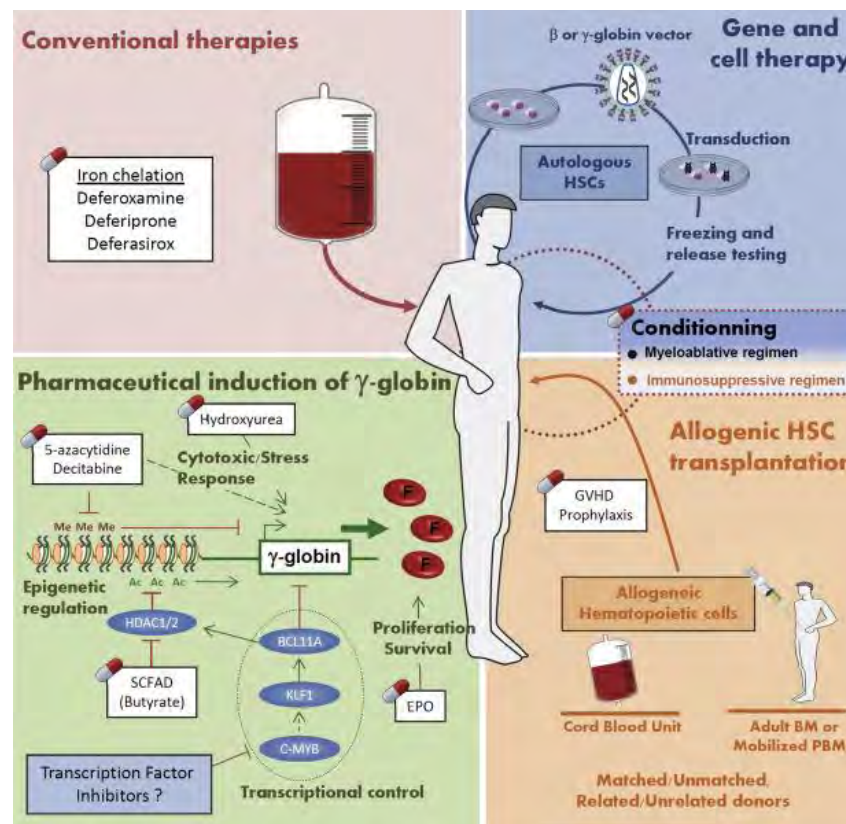
Jadenu Experience Sharing from NTUH

張修豪醫師/盧孟佑醫師
台大醫院小兒部血液腫瘤科

β重型海洋性貧血的治療

維持治療

- Supportive
 1. 終生定期輸血
 2. 排鐵劑治療
- Gama globin Induction therapy
- 紅細胞成熟劑治療:
Luspatercept



根本治療

- 基因治療
- 造血幹細胞移植

新排鐵劑劑型

JADENU® 解鐵定

- 降低副作用
- 方便使用
- 加強吸收 減低使用劑量

Total Overall AEs

90%
EXJADE

90%
JADENU












Total Drug-Related* Overall AEs

63%
EXJADE

47%
JADENU



	Overall AEs		Drug-Related Overall AEs*	
	EXJADE (n=86)	JADENU (n=87)	EXJADE (n=86)	JADENU (n=87)
† Diarrhea	35%	33%	20%	14%
† Nausea	27%	28%	13%	9%
† Abdominal pain	27%	26%	16%	8%
† Urine protein/creatinine ratio increased	13%	21%	11%	17%
† Vomiting	22%	17%	15%	5%
† Constipation	15%	8%	4%	1%
† Headache	14%	6%	0%	1%

	JADENU® Sprinkle (deferasirox) granules¹	JADENU® (deferasirox) tablets¹	EXJADE® (deferasirox) tablets for oral suspension²
Dosage Form	 <p>Once-daily granules in sachet</p> <ul style="list-style-type: none"> • Same active ingredient as EXJADE • Does not contain lactose or SLS 	 <p>Once-daily film-coated tablets</p> <ul style="list-style-type: none"> • Same active ingredient as EXJADE • Does not contain lactose or SLS 	 <p>Once-daily tablets for oral suspension</p> <ul style="list-style-type: none"> • Contains lactose and sodium lauryl sulfate (SLS)
Preparation	 <p>Sprinkle on soft food (eg, yogurt or applesauce) immediately prior to use</p>	 <ul style="list-style-type: none"> • Can be taken anytime, anywhere • No preparation required 	 <p>Thoroughly mix in liquid until fine suspension is obtained, and swallow*</p> <p>Resuspend any residue in a small amount of liquid</p>
Meal Considerations	  <p>With or without a light meal†</p>		 <p>Fasting for 30 minutes required</p>

加強吸收

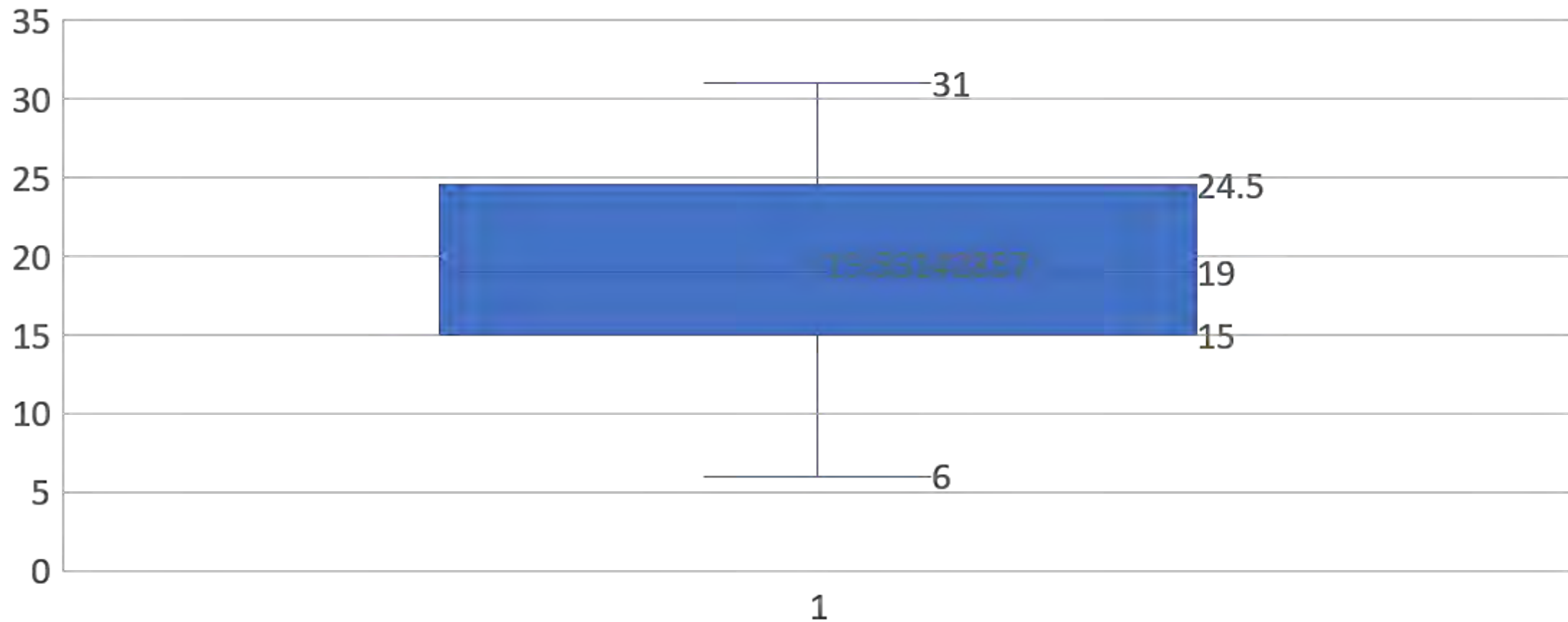
	JADENU Sprinkle JADENU Tablets		EXJADE
	14 mg/kg/day	STARTING DOSE	20 mg/kg/day
	3.5-7 mg/kg	TITRATION INCREMENTS	5-10 mg/kg
	28 mg/kg/day	MAXIMUM DOSE	40 mg/kg/day
	90 mg 180 mg 360 mg	DOSE STRENGTHS	125 mg 250 mg 500 mg

The dose of JADENU should be about **30% lower** than a patient's dose of EXJADE

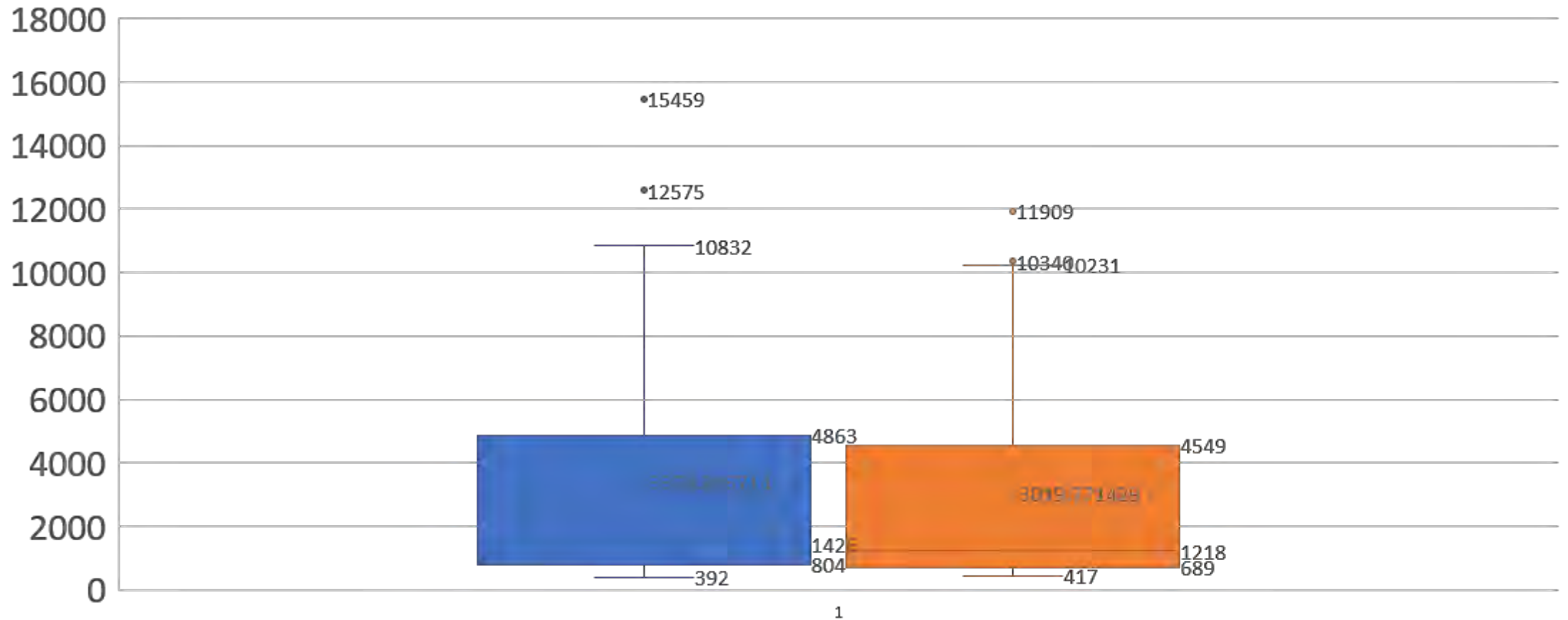
Clinical characteristics of our patients with transfusion-dependent thalassemia

- Total patient number: 33
- Male: female = 15:18
- Age (years): 34 (25-47)
- Duration of Jadenu administration: 1.5 to 6 months

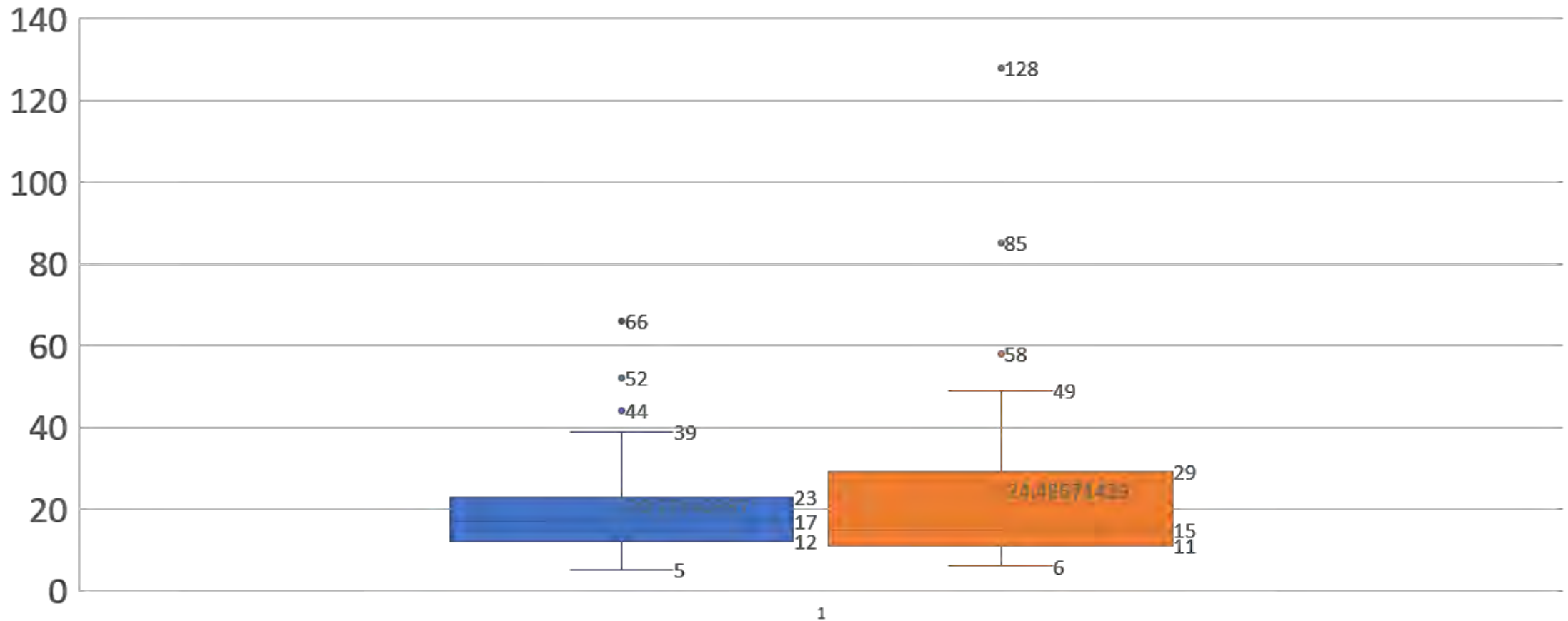
Dosage of Jadenu (mg/kg/day)



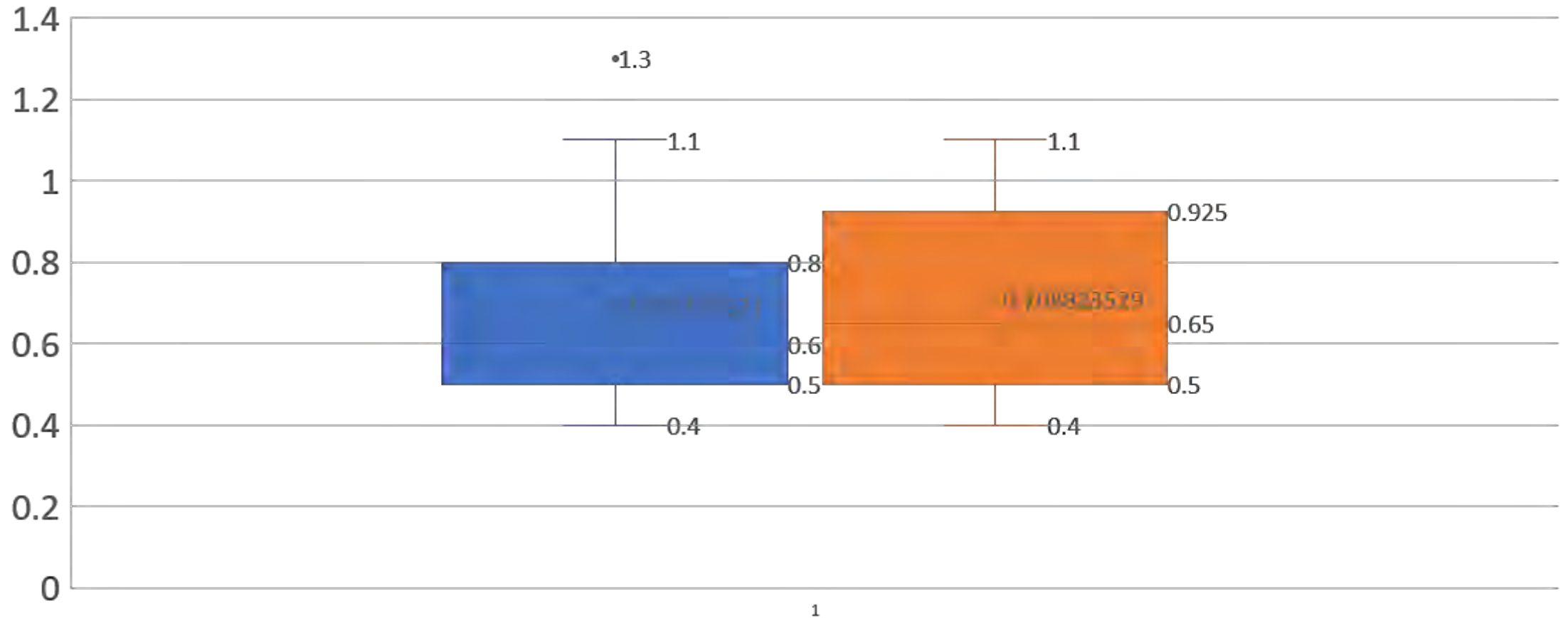
Serum ferritin level (ng/mL) before and after Jadenu (P=0.16 by paired t test)



Serum ALT level (U/L) before and after Jadenu (P=0.22 by paired t test)

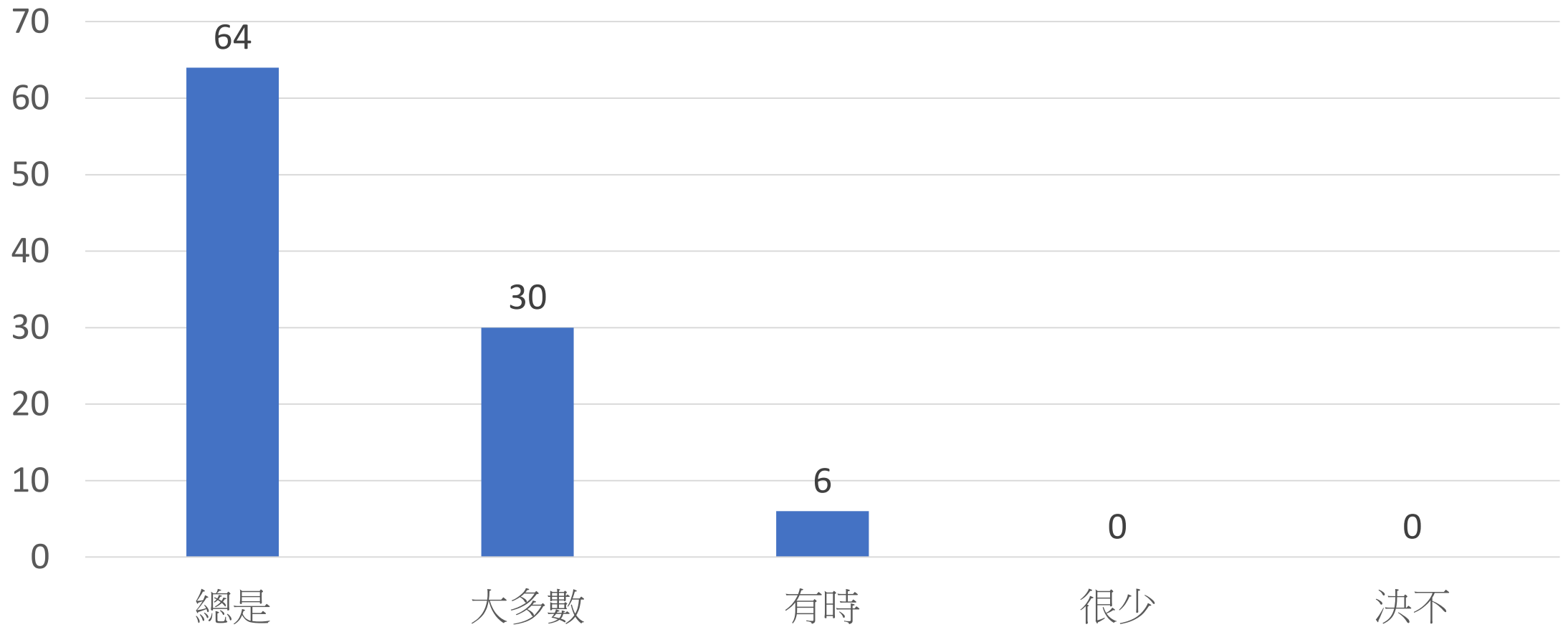


Serum Creatinine level (mg/dL) before and after Jadenu (P=0.31 by paired t test)

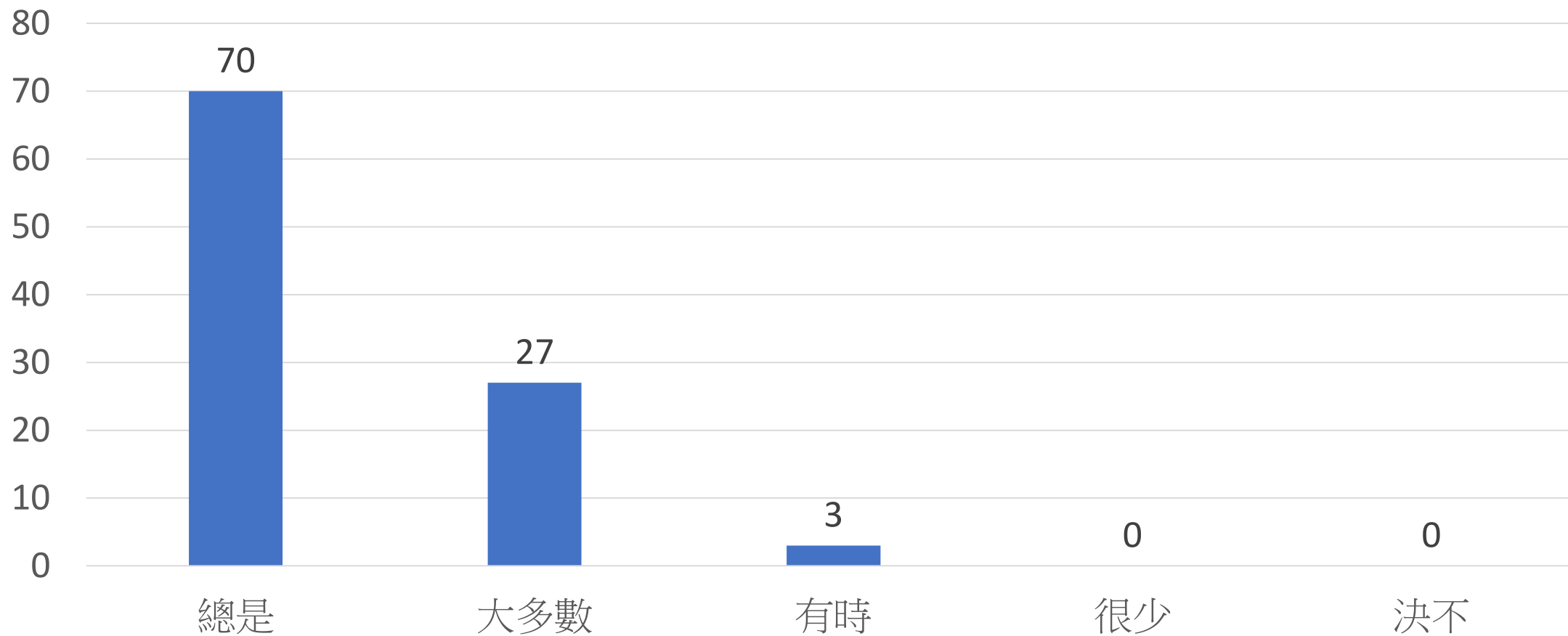


病人使用Jadenu之問卷調查結果

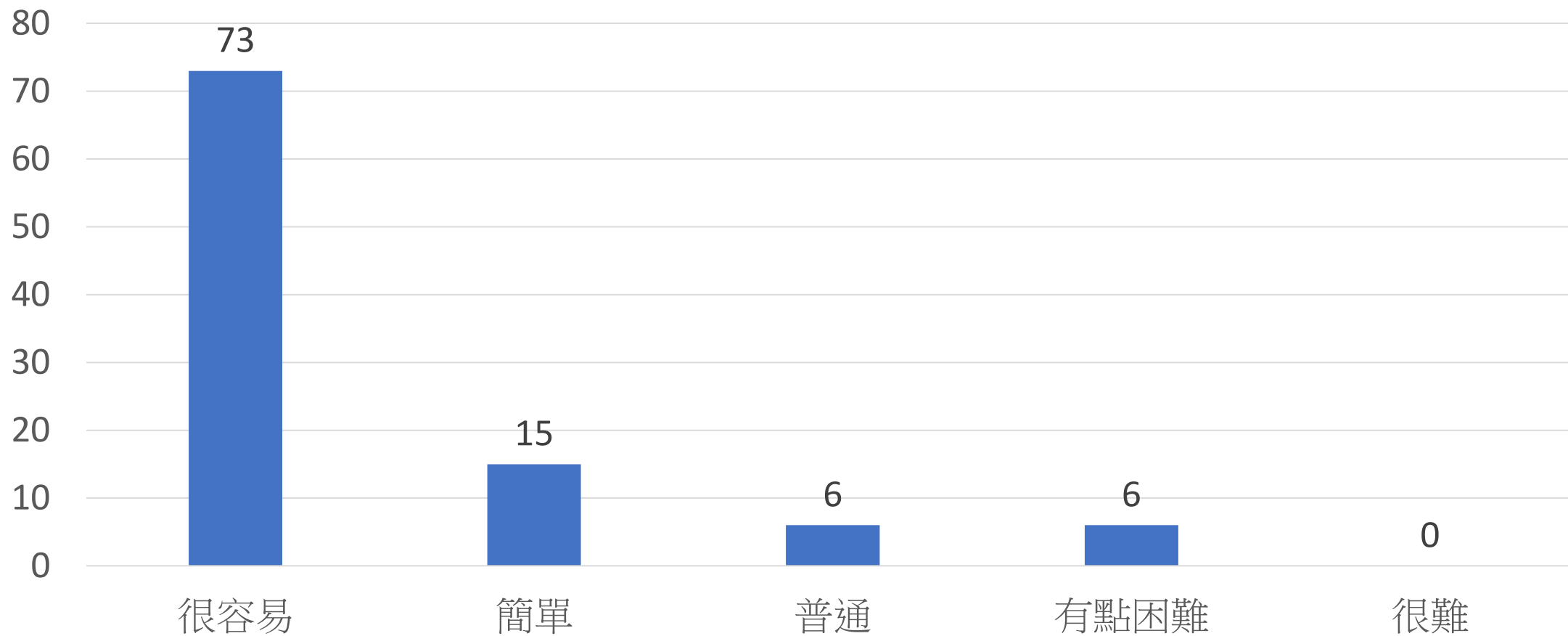
在過去一周中，您多常記得使用排鐵劑？ (%)



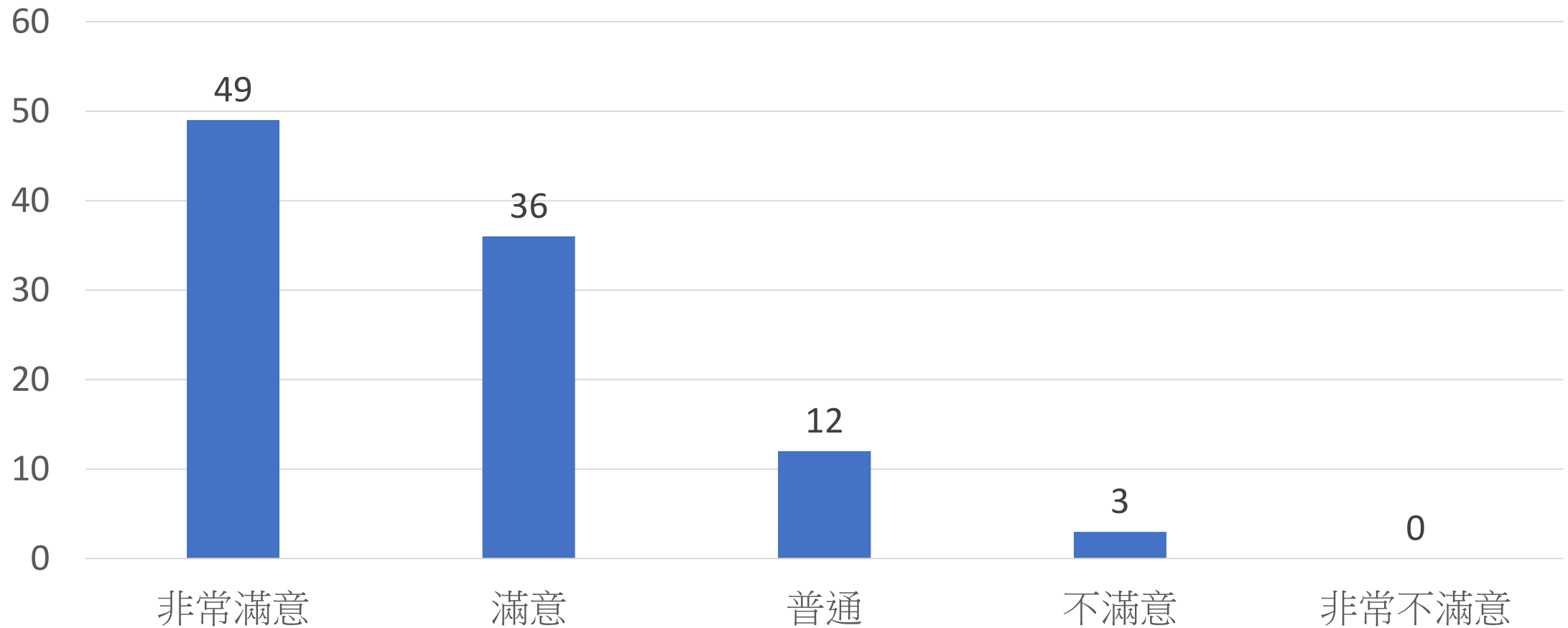
在過去一周中，您遵照醫生的指示使用排鐵劑的頻率？ (%)



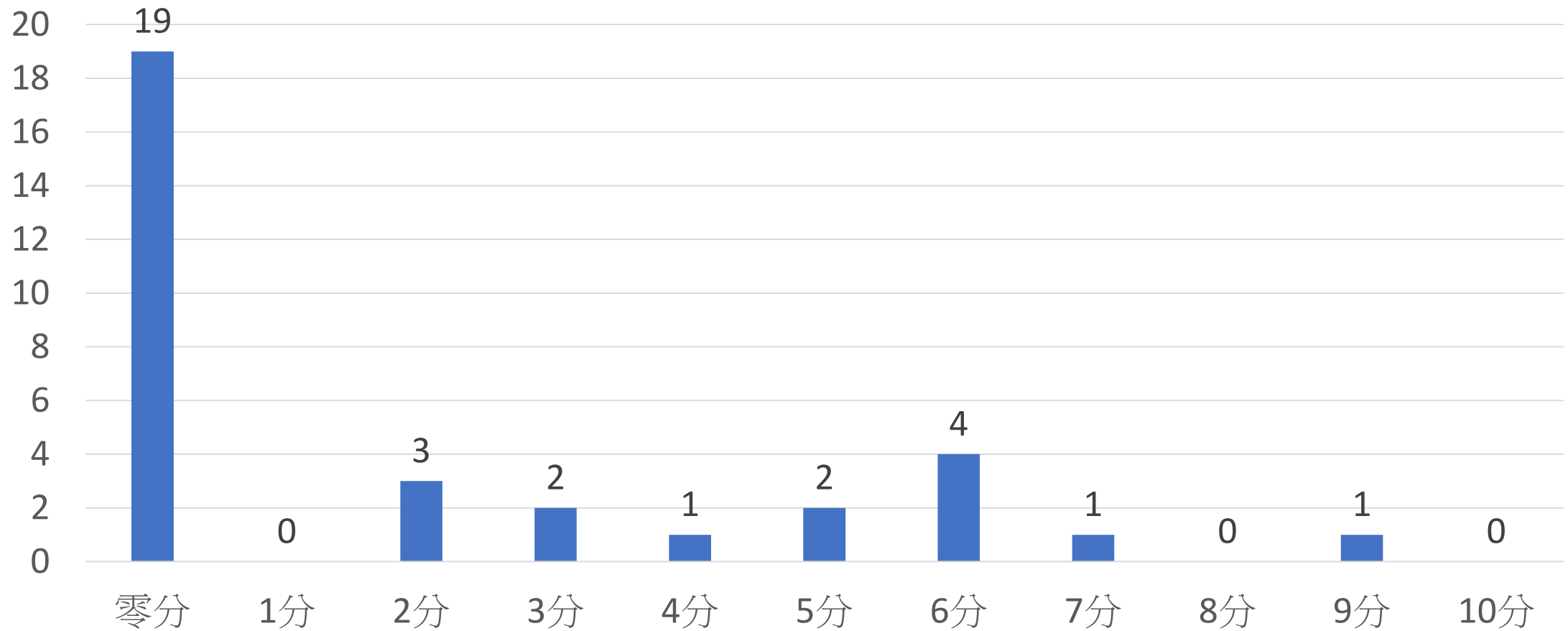
在過去一周中，您使用排鐵劑的難易程度 是多少？ (%)



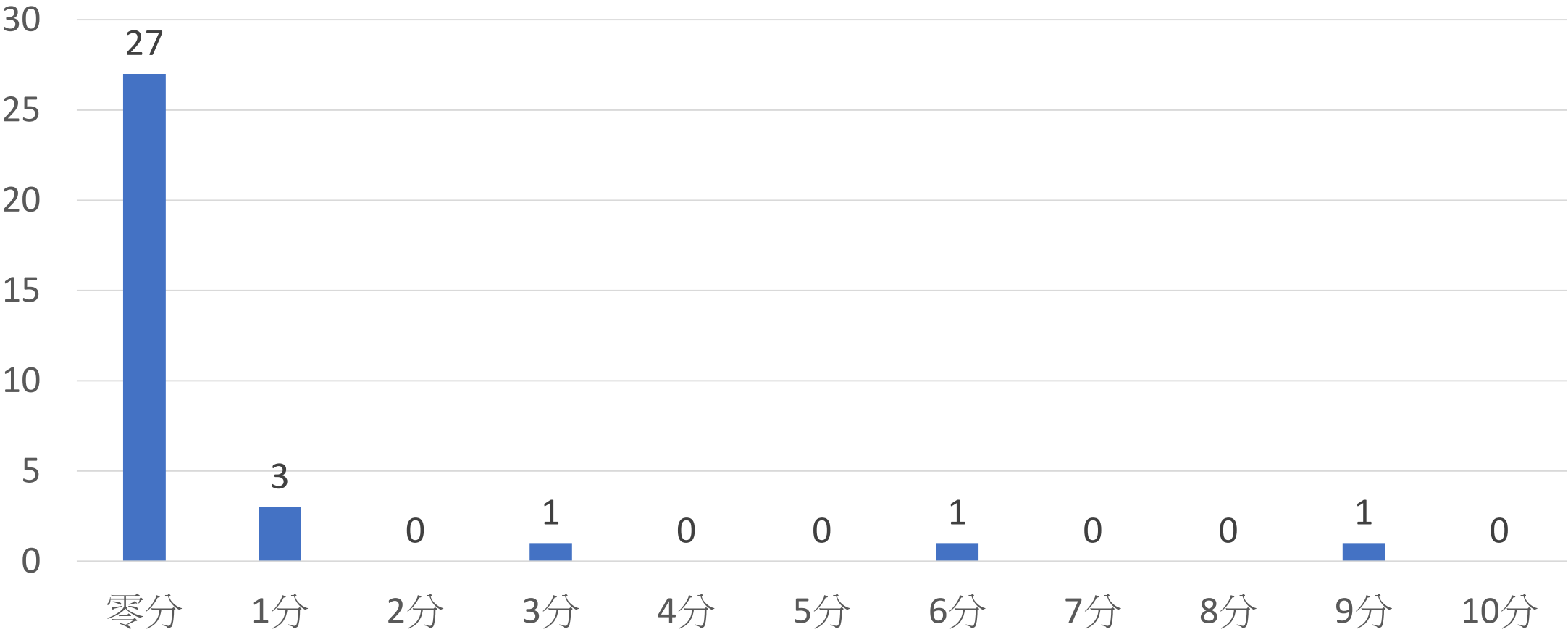
在過去一周中，您對自己使用排鐵劑的滿意程度如何？(%)



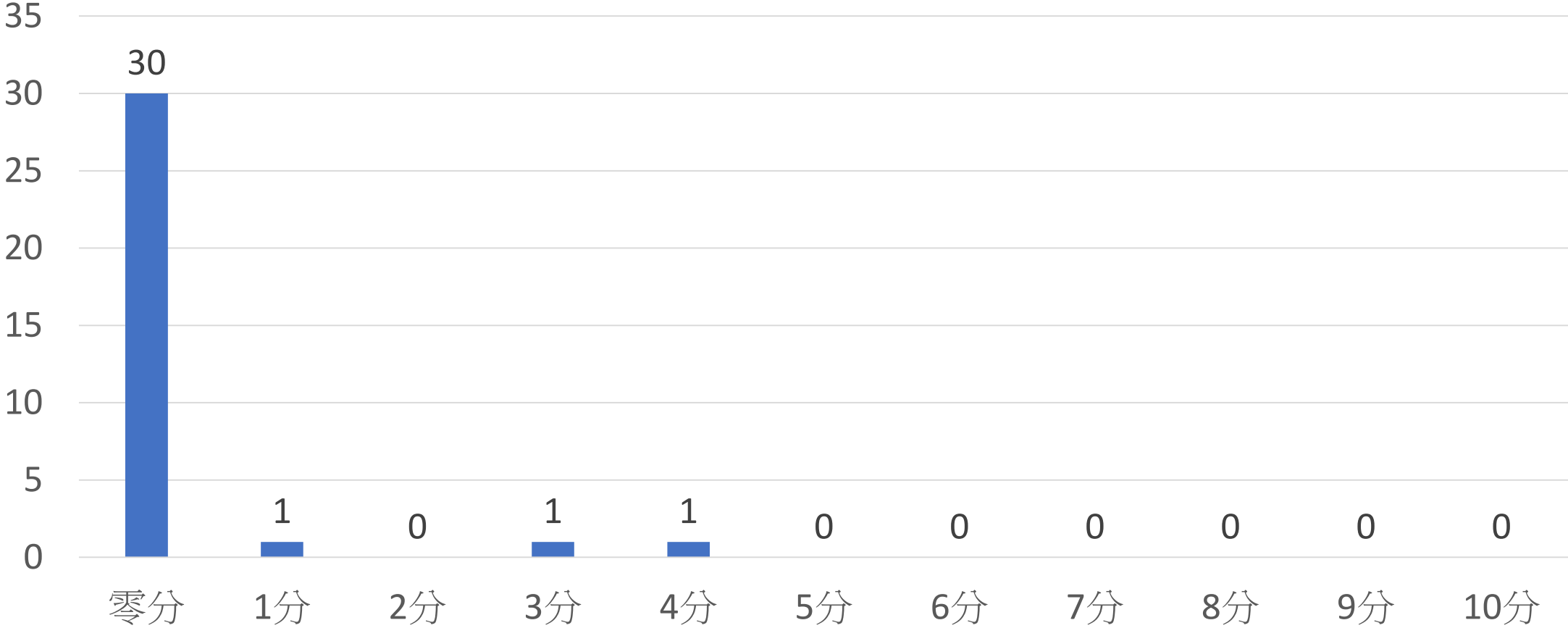
評估過去一周的症狀嚴重程度 腹部疼痛 (0-10) (case no)



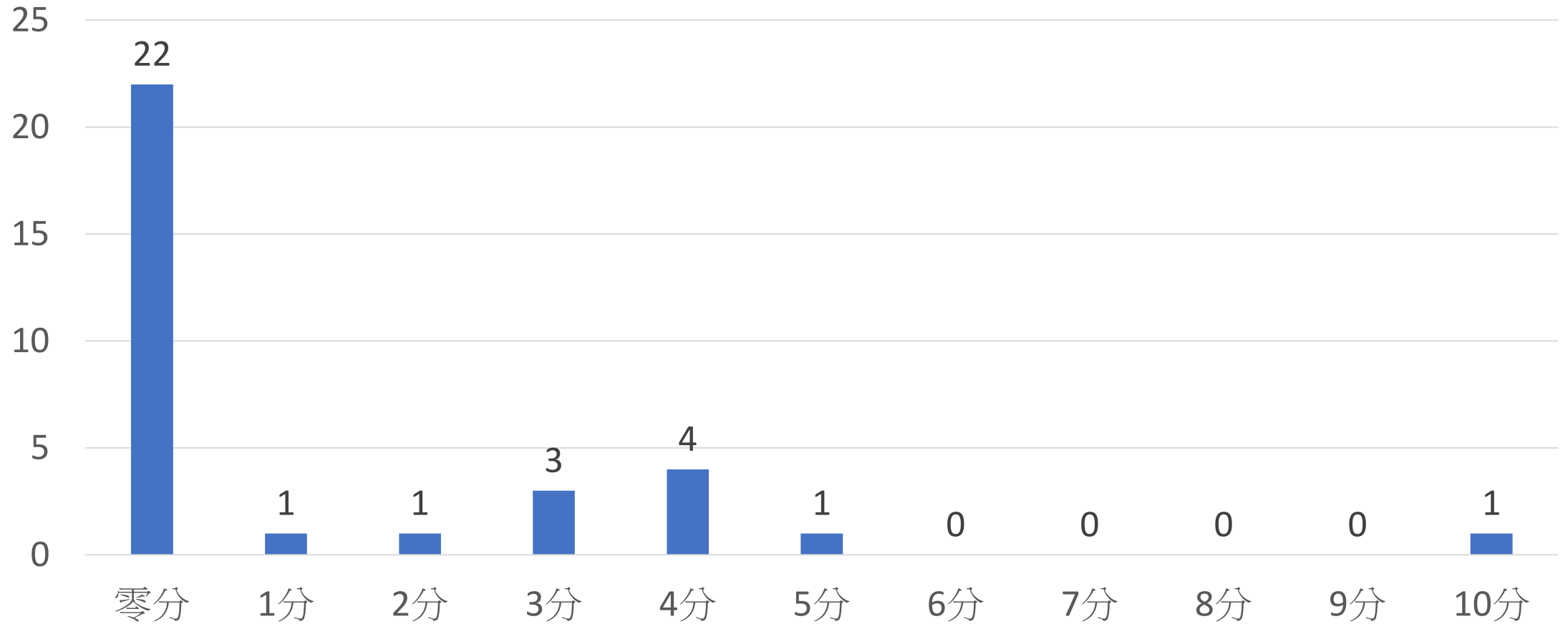
評估過去一周的症狀嚴重程度 噁心 (0-10) (case no)



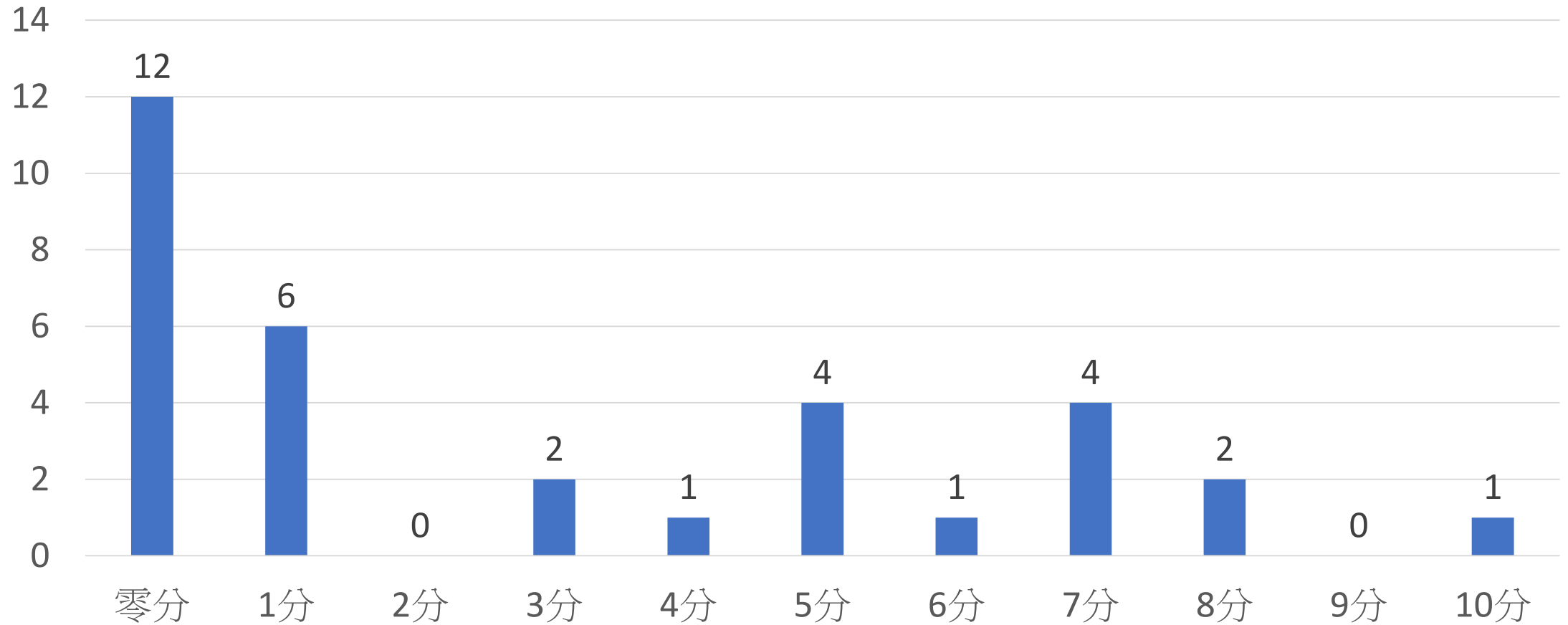
評估過去一周的症狀嚴重程度 嘔吐 (0-10) (case no)



評估過去一周的症狀嚴重程度 便秘 (0-10) (case no)



評估過去一周的症狀嚴重程度 腹瀉 (0-10) (case no)



Conclusions

- Good safety profiles and adherence from patients
- Good satisfaction from patients
- The efficacy of iron chelating in our patients needs further follow up

Thank you for listening!